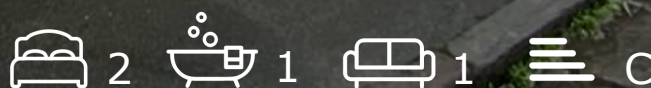




26a Brentry Road
Fishponds, Bristol, BS16 2AA

Asking price £295,000



26a Brentry Road



Description

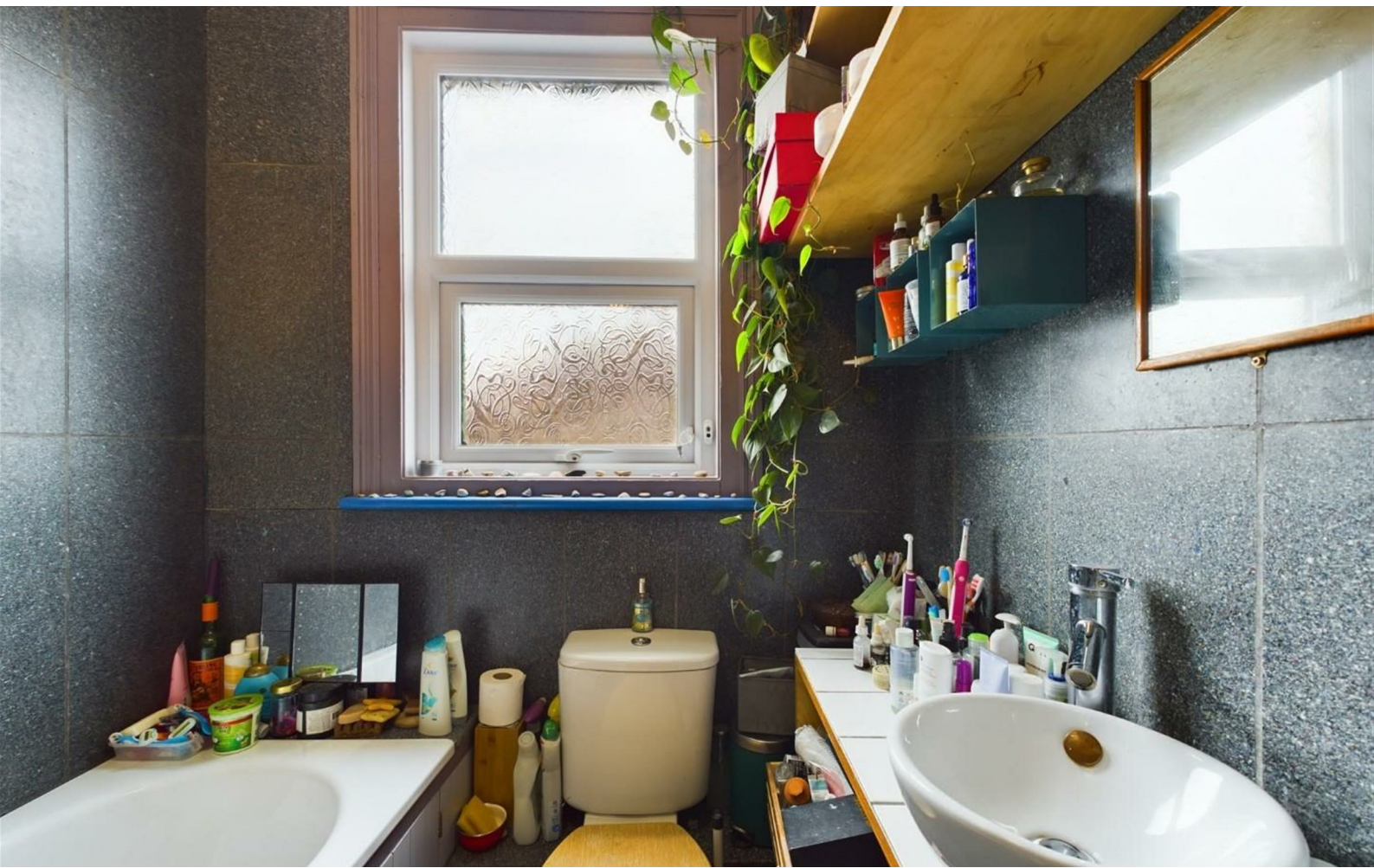
Spacious and unique maisonette located in the Thingwall Park area of Fishponds within easy reach of local independent shops, cafes and with great links to the City. This lovely home is set over two floors and comprises a full width lounge/dining space with bay window, bespoke fitted kitchen, modern bathroom and a double bedroom with built in high level bed with storage underneath.

On the top floor you'll find a large open plan bedroom with plenty of light and exposed brickwork giving it that loft apartment feel. There are two storage rooms which could lend well to a study or walk in wardrobe. Filled with lots of period charm and stylish bespoke storage solutions this home offers a great space to live in the Heart of Fishponds. Please call to view!

Bristol City Council Tax A. 985 years left on lease. Ground rent £0 Management charge £0

- SPACIOUS MAISONETTE
- TWO DOUBLE BEDROOMS
- BESPOKE KITCHEN
- GAS CENTRAL HEATING
- NO CHAIN
- THINGWALL PARK LOCATION
- BAYED LOUNGE
- BATHROOM
- DOUBLE GLAZING

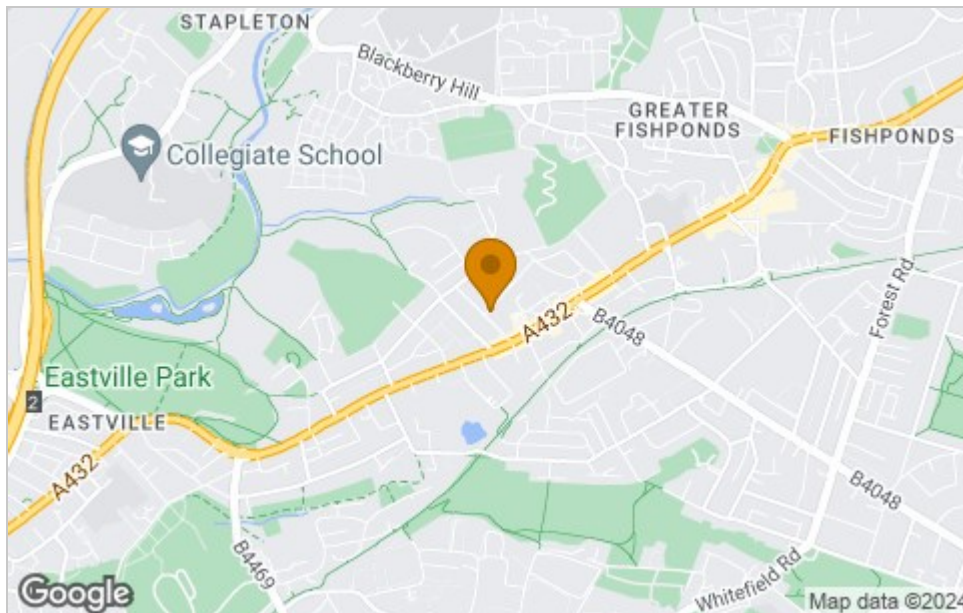




Floor Plan



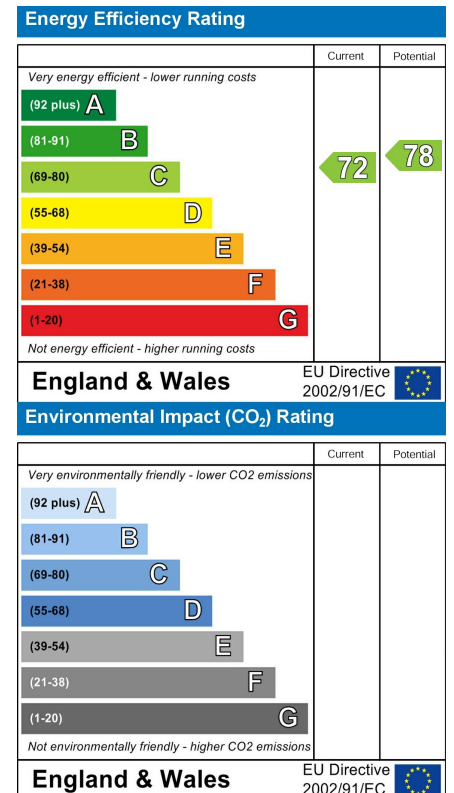
Area Map



Viewing

Please contact our House + Co Property (Sales) Office on 0117 907 0020 if you wish to arrange a viewing appointment for this property or require further information.

Energy Efficiency Graph



These particulars, whilst believed to be accurate are set out as a general outline only for guidance and do not constitute any part of an offer or contract. Intending purchasers should not rely on them as statements of representation of fact, but must satisfy themselves by inspection or otherwise as to their accuracy. No person in this firm's employment has the authority to make or give any representation or warranty in respect of the property.